

BUILDING  
MATERIAL [SELECT]

CATALOGUE

# WINDOWS & DOORS

BY ORIENT SUNDAR | MOSER

Aluminum Series  
Aluminum Clad Wood Series  
Passivhaus Series

## BUILDING MATERIAL [SELECT]

Building Material Select (BMS) redefines building material supply and leads with innovative design and development. Based in Toronto, we bring over 20 years of experience in the design-build business and global best practices to resolve local challenges.

BMS specializes in the research and development of building materials and products for local construction projects. Our global network of manufacturers guarantees competitive pricing for our clients and their project-specific needs.

- A Tilt & Turn aluminum window & aluminum clad wood window system
- A highly customized cabinet system
- Laminate, Lacquer and wood veneer Interior Doors
- Decorative wood veneer product
- Marble factory cut products directly from Italian Quarry
- Aluminum and Stainless Steel Custom Processing
- Digital fabrication and manufacturing with GFRG, GFRC, Wood, Aluminum and Stainless steel.

BMS works with a global network of manufacturers and employs enhanced construction methods that benefit the client. We also prioritize building technology that saves time, reduces cost and allows seamless building.

Our team comprises over 30 in-house staff of designers, engineers, site managers and tech support who are committed to each client's project success.



### SHOWROOM

There's no better feeling than the immersive feeling of a visit to the 23,000 sf BMS showroom. Visit us in Markham, Ontario. We offer free in-house consultation & quotations.

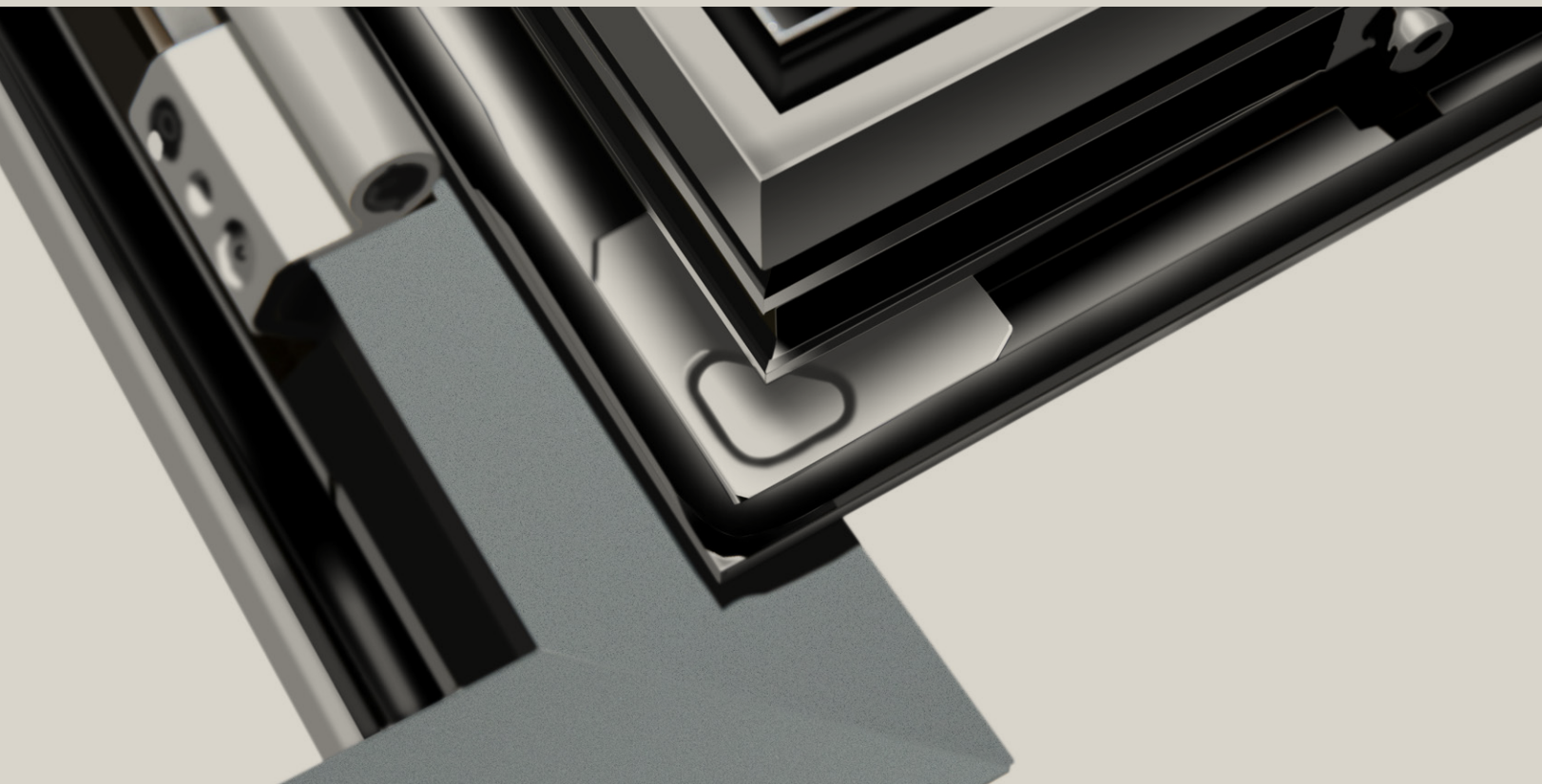
## BUILDING MATERIAL SELECT SHOW ROOM

2710 - 14th Ave.  
Markham, ON. L3R 0J1



# ALUMINUM SERIES

CRAFTED TO PERFECTION



## Flexible & Efficient

Our windows operates in flexible style to satisfy the most demanding design requirement.

The aluminum mullions are fully equip-ment with thermal breaks, insulated edge, low-E coating, argon infill and tempered glass.

## German Hardware

To achieve a high standard in smooth operation & long term durability, our windows are equipt with German Roto Hardware, a company leading the way for window & door hardwares over 80 years.

## Outdoor Durability

Our powder-coated aluminum finishes are adaptable to climate differences which allows for durability and a low maintenance requirement. The colours are richer, deeper, and last longer than standard coating and anodized finishes.



	U Value	Water Penetration	Wind Resistance	Air Tightness
Fixed	0.21 - 0.28	350-500 Pa	5 Kpa	0.5 m3/m.h
Awning	0.21 - 0.31	500 Pa	5 Kpa	0.5 m3/m.h
Sliding	0.26 - 0.35	500 Pa	4 Kpa	0.5 m3/m.h

\*ALL OF OUR WINDOW PRODUCTS ARE NFRC CERTIFIED

## Triple Tempered Low-E Glass

Durable & Energy efficient.

## Argon Filled Space

90% Argon Infill, highest industry standard

## Insulated Edge

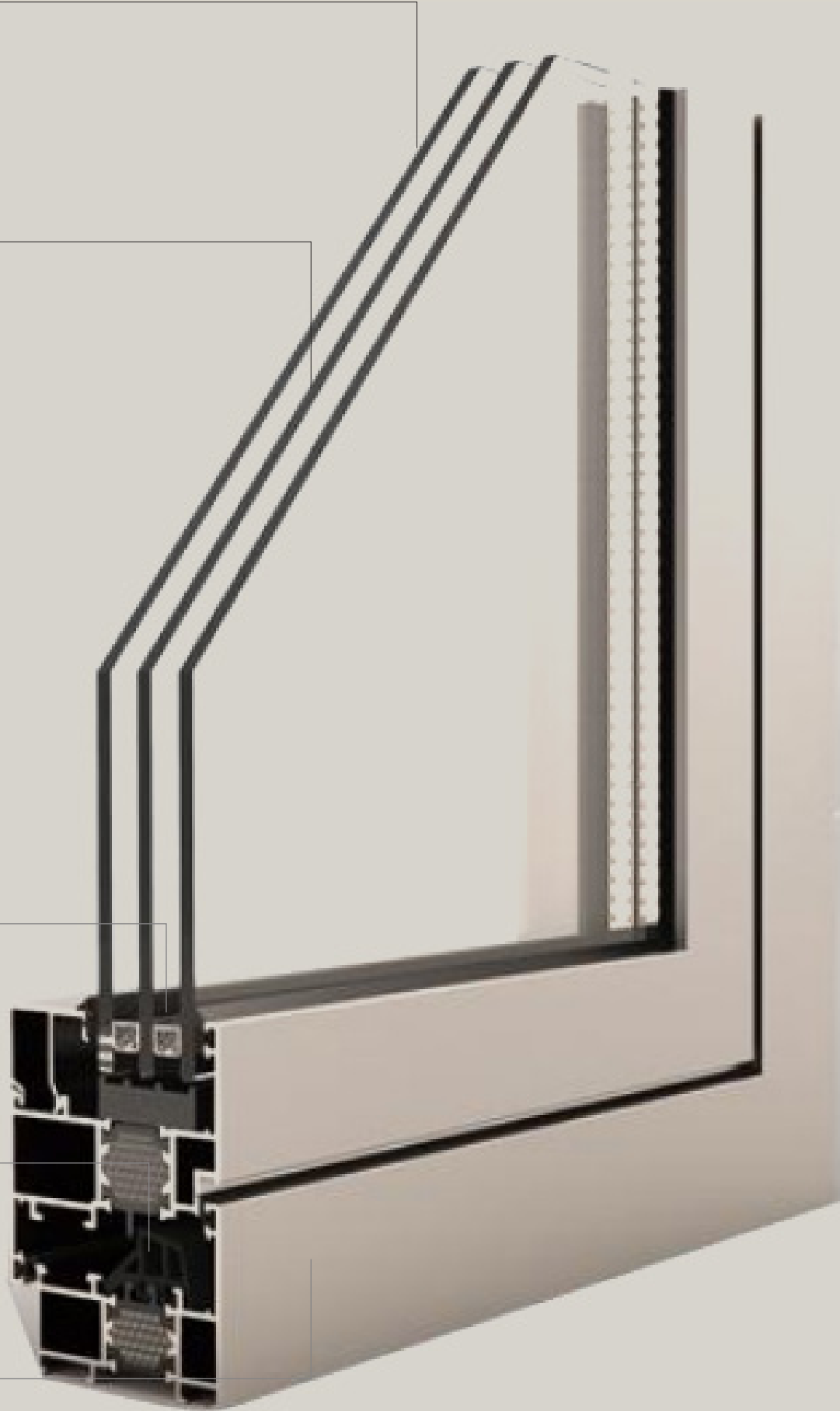
For increased energy performance

## Thermal Break

Thermally efficient for desired energy performance.

## Durable Finish

Powered Coated Aluminum with highest industry standard



# FLEXIBLE & EFFICIENT

## OPERATING STYLES:

### WINDOWS

- Single or Double Casement
- Inward Swing
- Single or Double Tilt & Turn
- Awning
- Fixed
- Operating Angle: 90° & 135 °

### DOORS

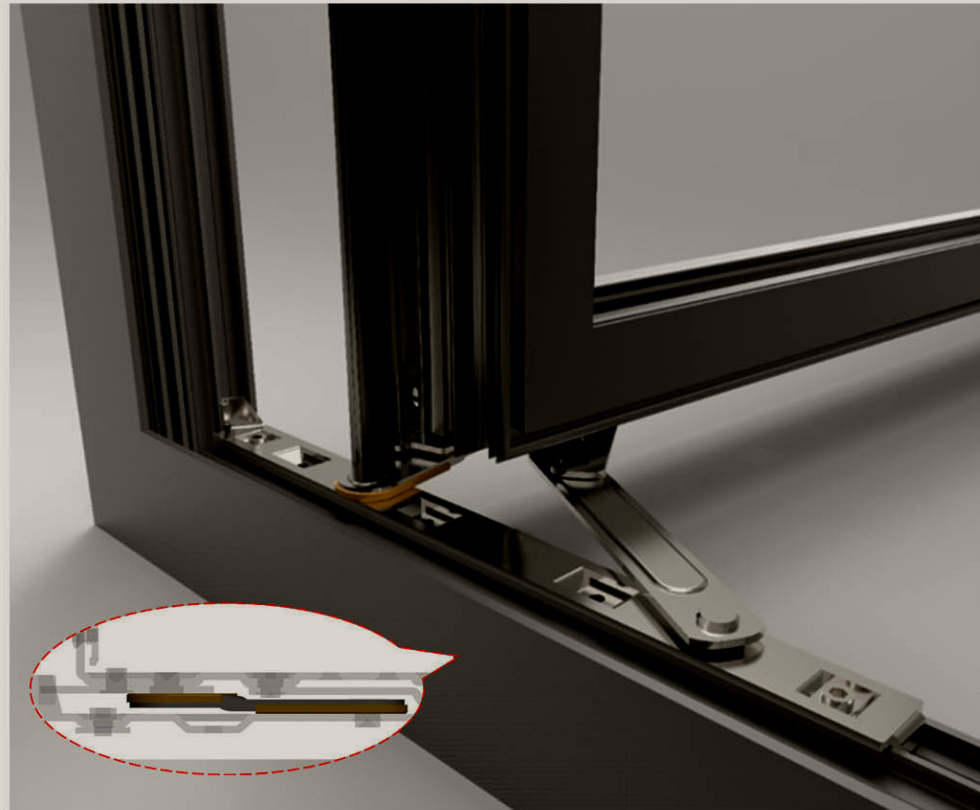
- Single Inward Hinged Door
- Double Inward French Door
- Lift & Slide Door
- Bi-Folding
- Single & Double Casement
- Operating Angle: 90° & 135 °



---

## GERMAN HARDWARE

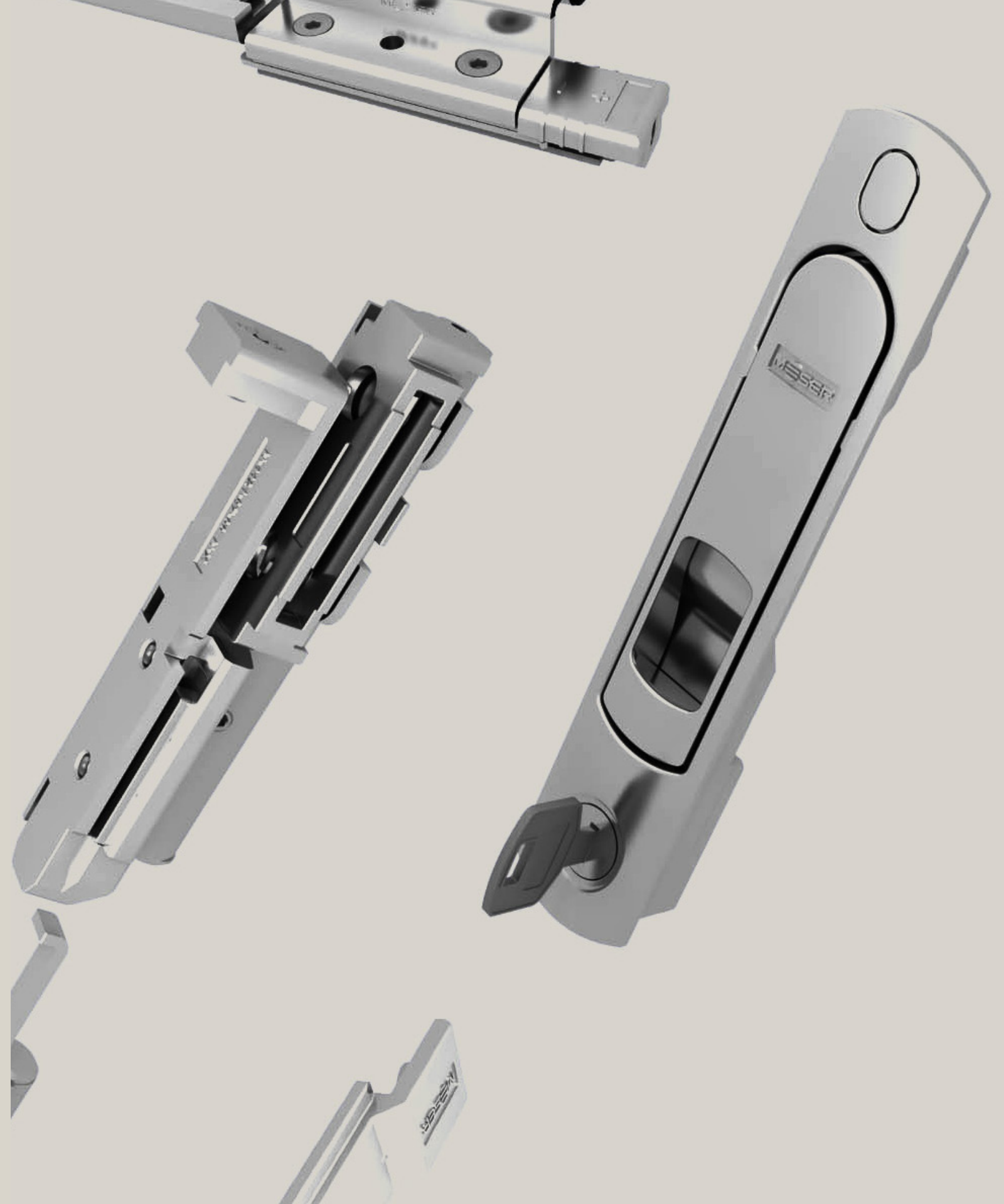
---



### SMOOTH & RELIABLE

To achieve a high standard in smooth operation & long term durability, our windows are equipt with German Roto Hardware, a company leading the way for window & door hardwares over 80 years.

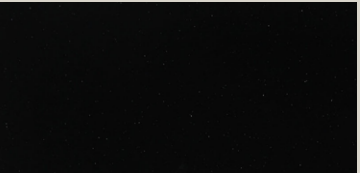
Today Roto window and door technology is one of the world's leading manufacturers of window and door hardware. All over the world, Roto is synonymous with innovative, individual and secure hardware systems that increase the added value of windows and doors for people.



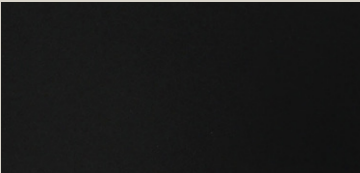
# OUTDOOR DURABILITY

POWDER COATED FINISH

LX3400



LW24FO



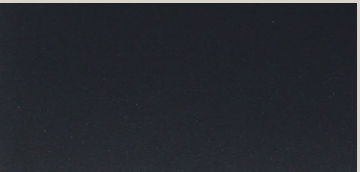
JW25LC



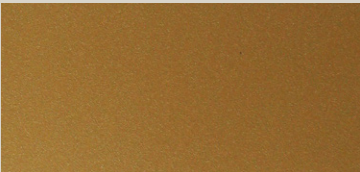
LX3280



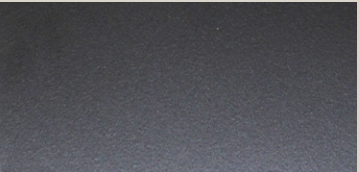
JL3240



JW3280



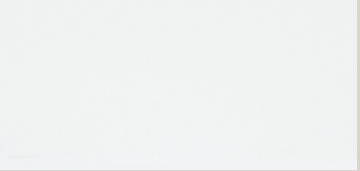
LY2KEO



JK33KO



JA3000

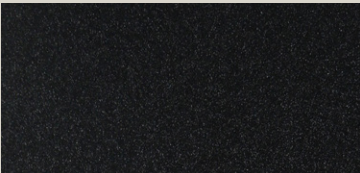


JM382O



ELEVEN STANDARD COLOUR FINISHES & OVER 200  
CUSTOM COLOURS AVAILABLE

LX3300



## UNMATCHED PERFORMANCE

Our powder coated aluminum finishes are designed to be low maintenance and long lasting. Colours are richer, deeper and last longer than standard coating and anodized finishes.

With aluminum you can customize the colour for even greater durability. Perhaps you're building a swimming pool enclosure or have a coastal property. For any application that is outside the normal domestic environment, powder coating can be enhanced to provide even greater protection.









# ALUMINUM-CLAD WOOD SERIES

ARTISANSHIP MET ENGINEERING



	U Value	Water Penetration	Wind Resistance	Air Tightness
Fixed	0.11 - 0.27	350-500 Pa	5 Kpa	0.5 m3/m.h
Awning	0.11 - 0.27	500 Pa	5 Kpa	0.5 m3/m.h
Sliding	0.13- 0.28	500 Pa	4.5 Kpa	1.0 m3/m.h



# FLEXIBLE & EFFICIENT

## OPERATING STYLES:

### WINDOWS

- Single or Double Casement
- Inward Swing
- Single or Double Tilt & Turn
- Awning
- Fixed
- Operating Angle: 90° & 135 °

### DOORS

- Single Inward Hinged Door
- Double Inward French Door
- Lift & Slide Door
- Bi-Folding
- Single & Double Casement
- Operating Angle: 90° & 135 °

### Argon Filled Space

90% Argon Infill, highest industry standard

### Triple Tempered Low-E Glass

Durable & Energy efficient.

### Insulated Edge

For increased energy performance

### Durable Finish

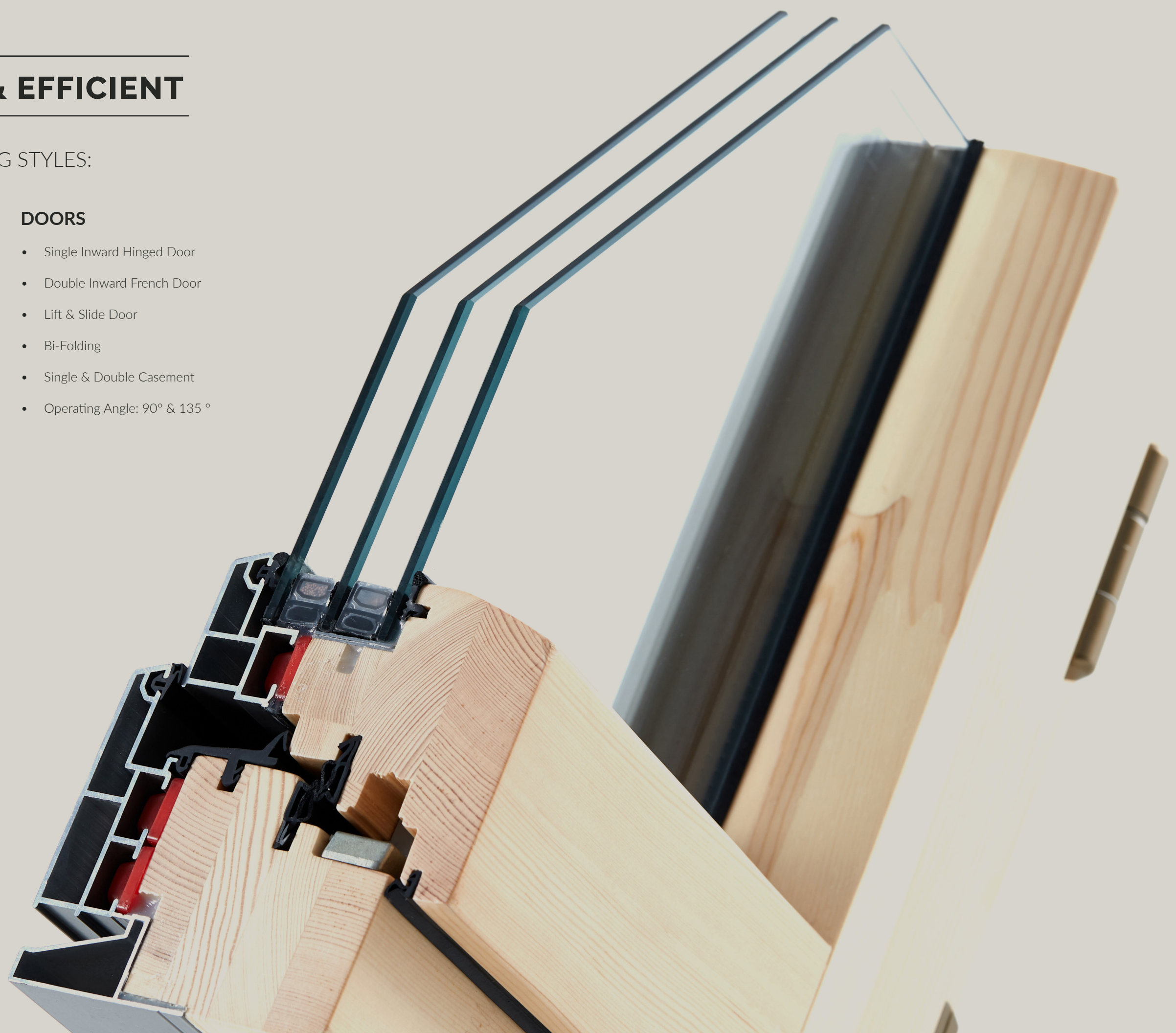
Aluminum Cladding on the exterior provides durability & minimum maintainance.

### Thermal Break

Thermally efficient for desired energy performance.

### Sustainable Wood

Pine or Oak from sustainable forest provides prestine finish, druability and energy efficiency.





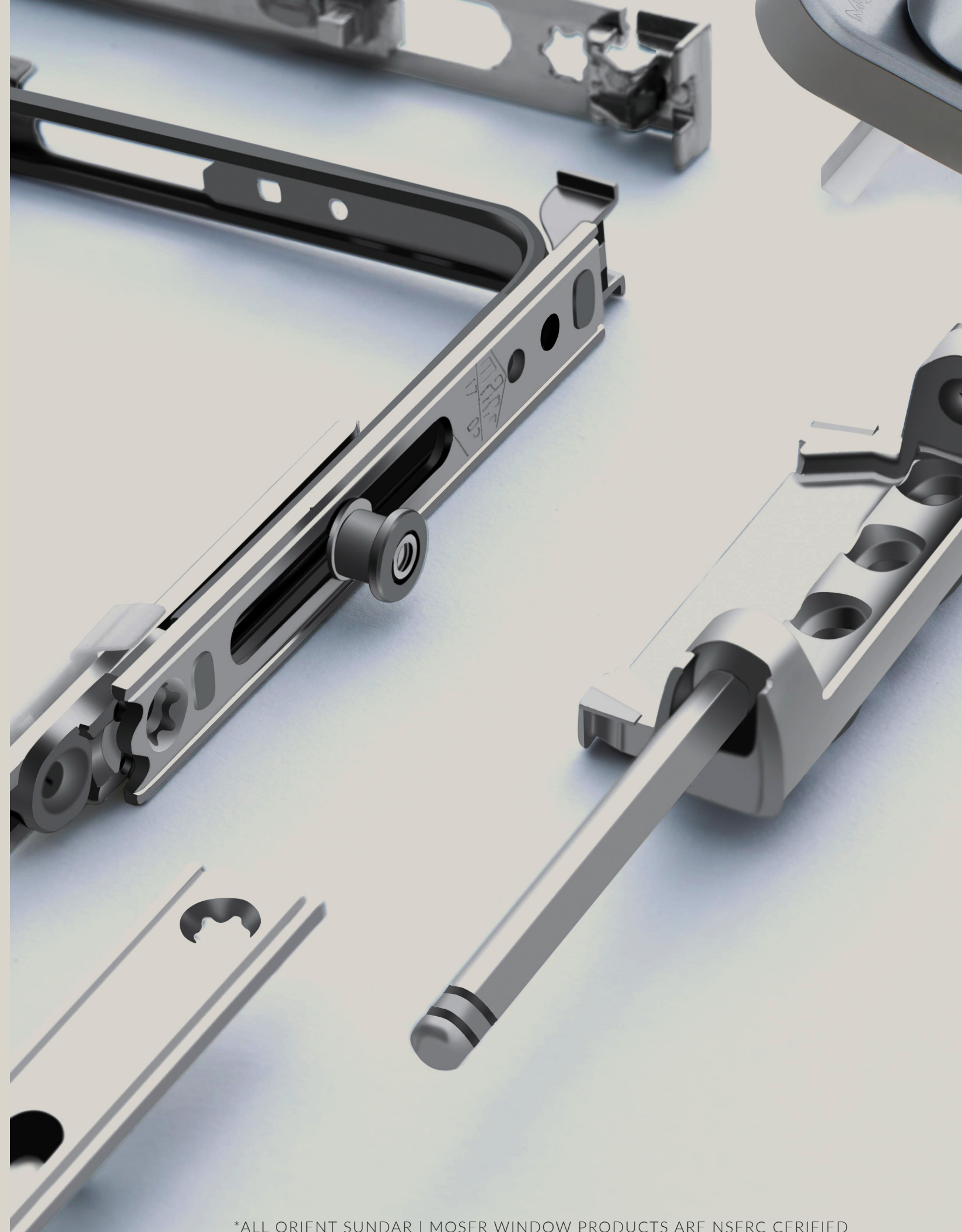
## GERMAN HARDWARE



### SMOOTH & RELIABLE

To achieve a high standard in smooth operation & long term durability, our windows are equipt with German Roto Hardware, a company leading the way for window & door hardwares over 80 years.

Today Roto window and door technology is one of the world's leading manufacturers of window and door hardware. All over the world, Roto is synonymous with innovative, individual and secure hardware systems that increase the added value of windows and doors for people.



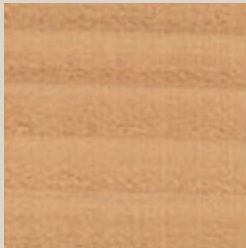
\*ALL ORIENT SUNDAR | MOSER WINDOW PRODUCTS ARE NSFRC CERIFIED



# PRESTINE & DURABLE FINISH

## NATURAL WOOD SELECTION

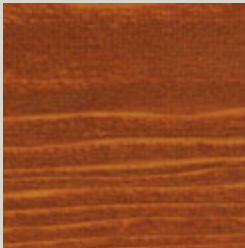
We offer a fine selection of pine and oak finished in a variety of different colours.



Clear



Pure



Mahogany



Walnut



Dark Walnut







## PASSIVHAUS SERIES

Certified by passive house institute, our aluminum clad passivhaus series offerings best in class energy performance with reasonable economy. With a staggering U value of 0.11, our passivhaus windows provide the most thermal comfort during the harsh Canadian winter.

U Value - 0.11 - 0.18  
Wind Resistance: 5KPa

Water Penetration: 700 Pa  
Air Tightness: 0.5m3/m.h

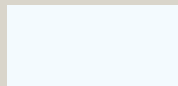


# ACCESSORIES

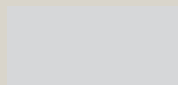
AVAILABLE FOR ALUMINUM & WOOD SERIES



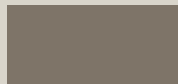
White



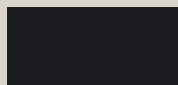
Grey



Champagne



Black



## Handles & Hardware Colour

Our Aluminum and Aluminum Clad Wood series come with standard Germany Roto Hardware in four different colours: White, Grey, Campaign and Black.

## INSECT SCREEN

-Stainless Steel and By-Folding

-Available for tilt and turn, awning, casement windows and sliding doors.

Speak to one of our representatives to see details



## INTERGRATED BLINDS

SANDWICHED BETWEEN GLASS PANELS

-Best performance, comfort

-Durability

-Easy Accessibility

-Powdered by magnetic or electricity

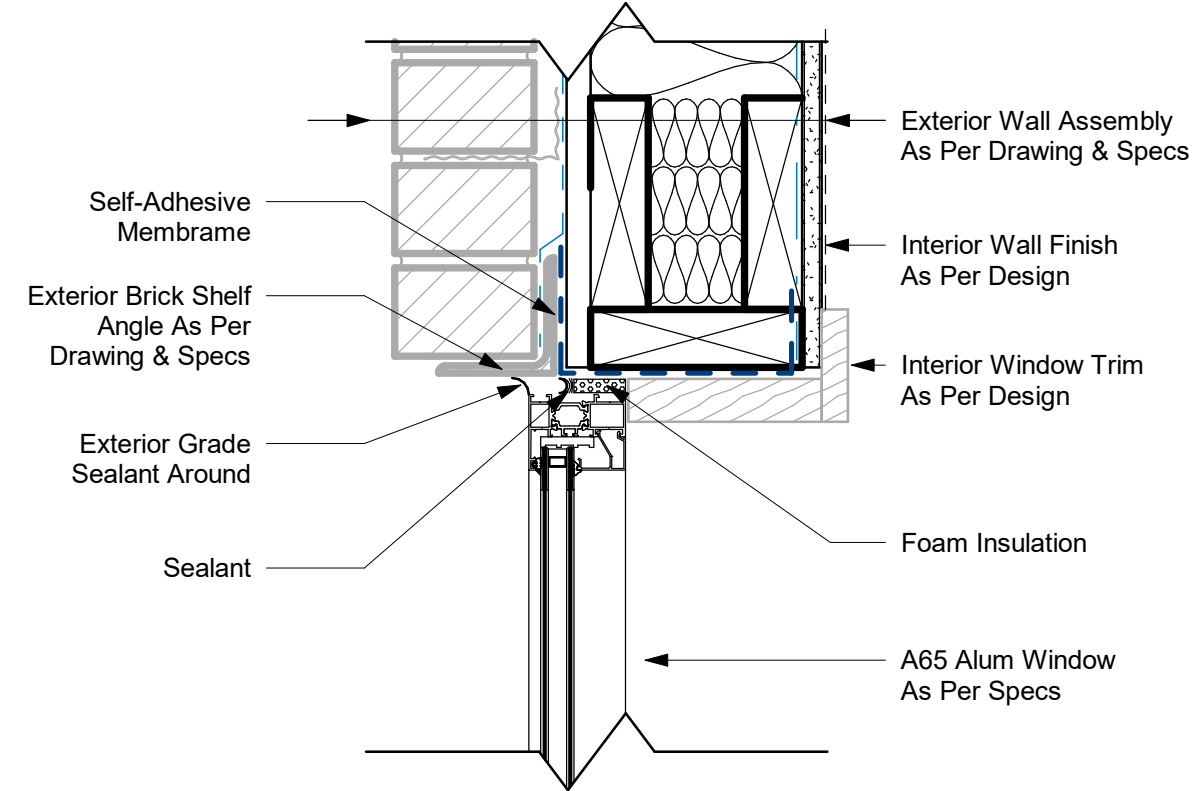






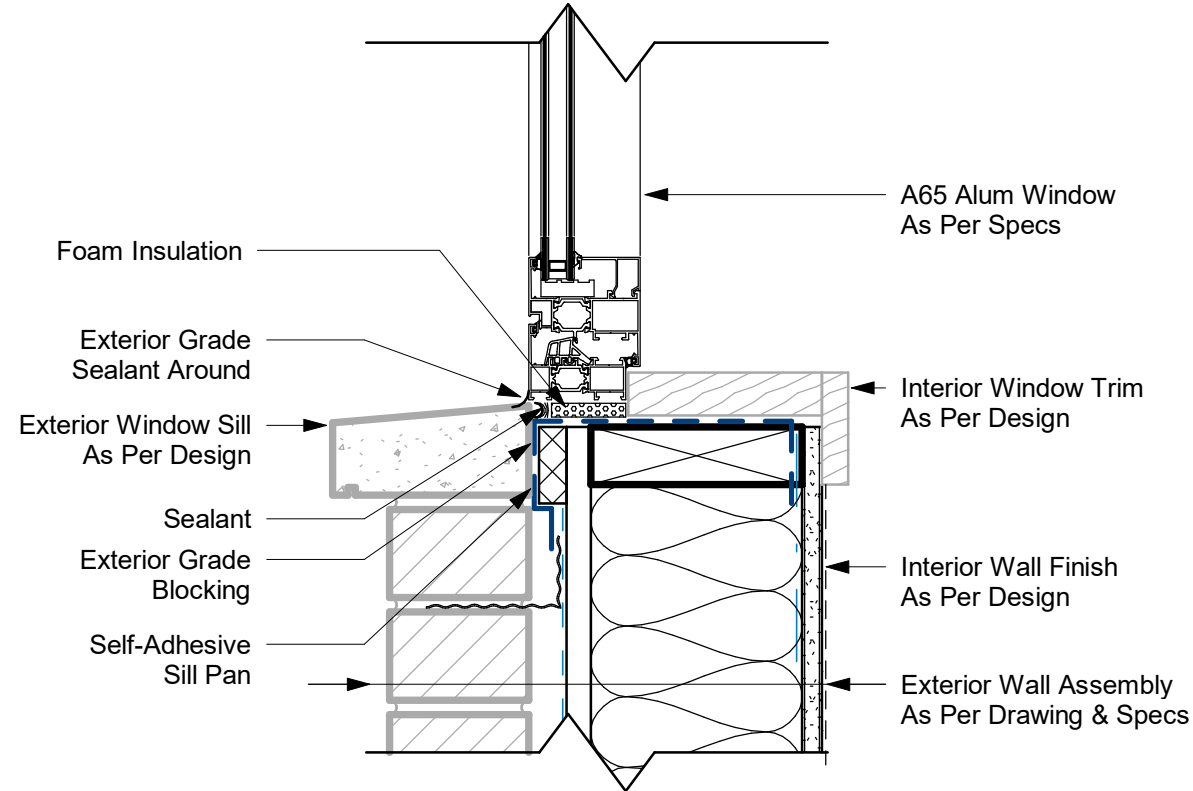


# ALUMNUM WINDOW - BRICK VENEER



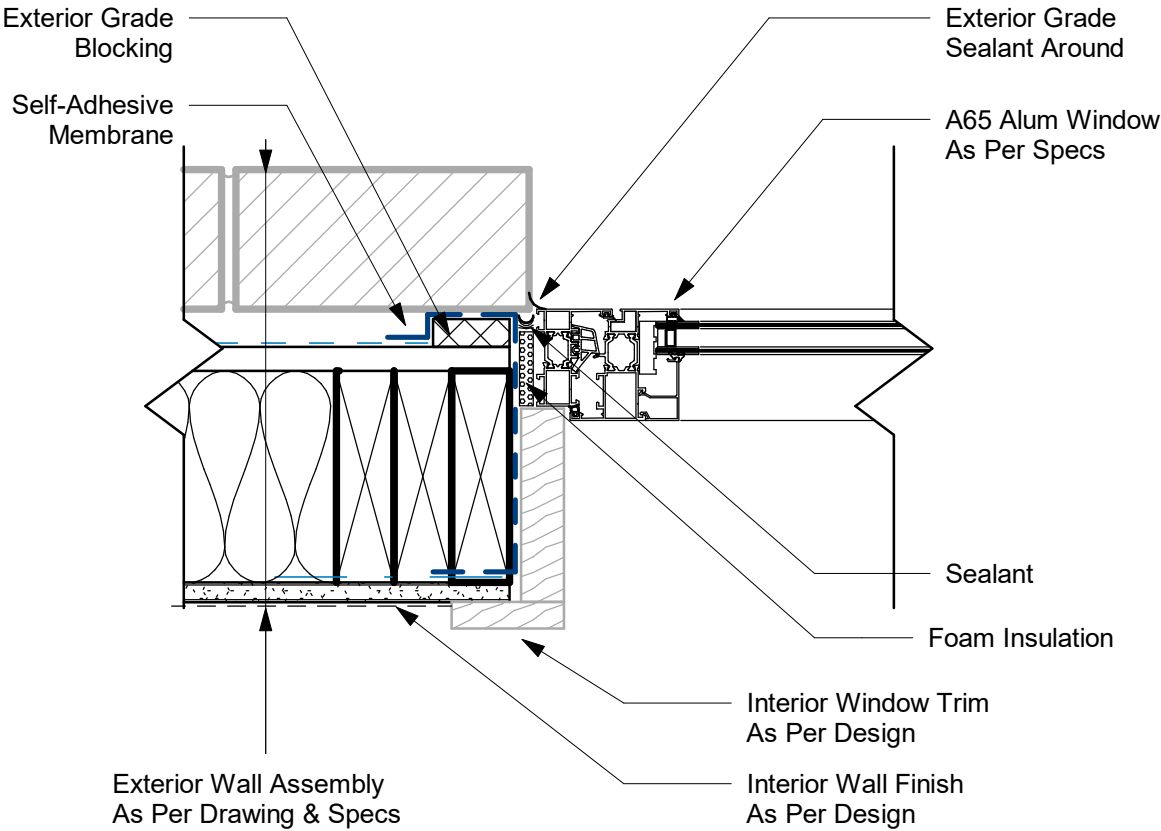
AL65 HEADER - BRICK VENEER

1:5



AL65 SILL - BRICK VENEER

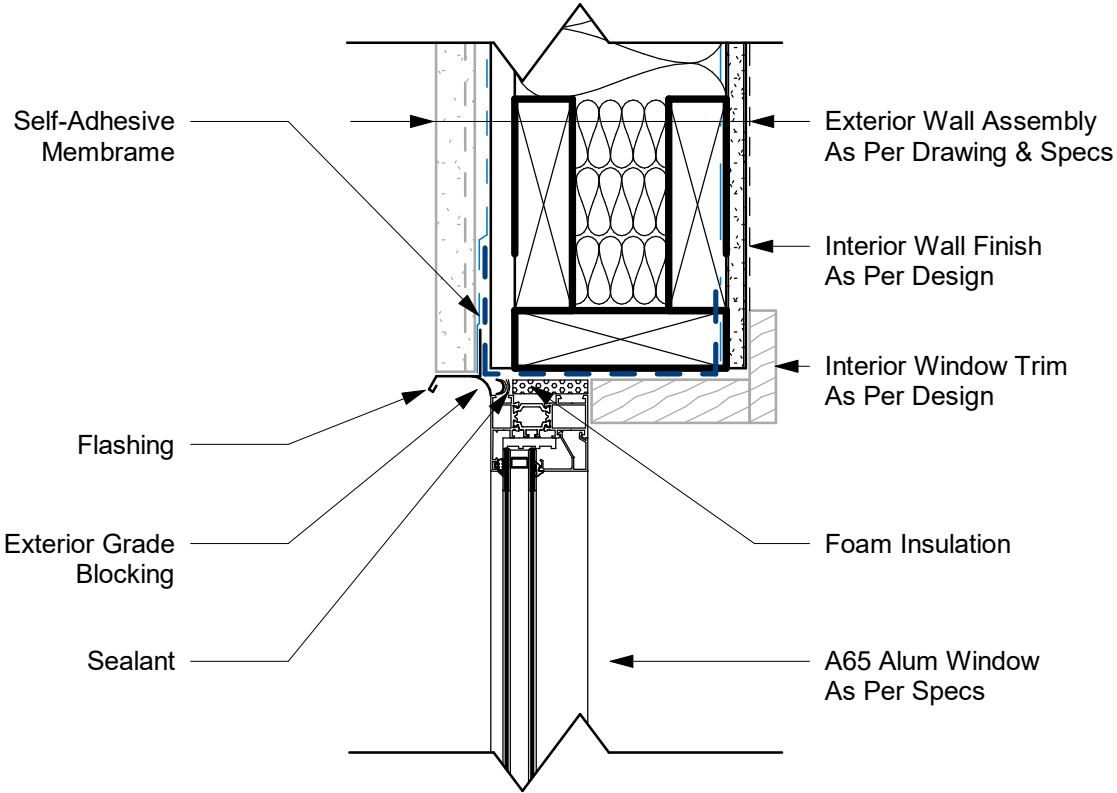
1:5



AL65 JAMB - BRICK VENEER

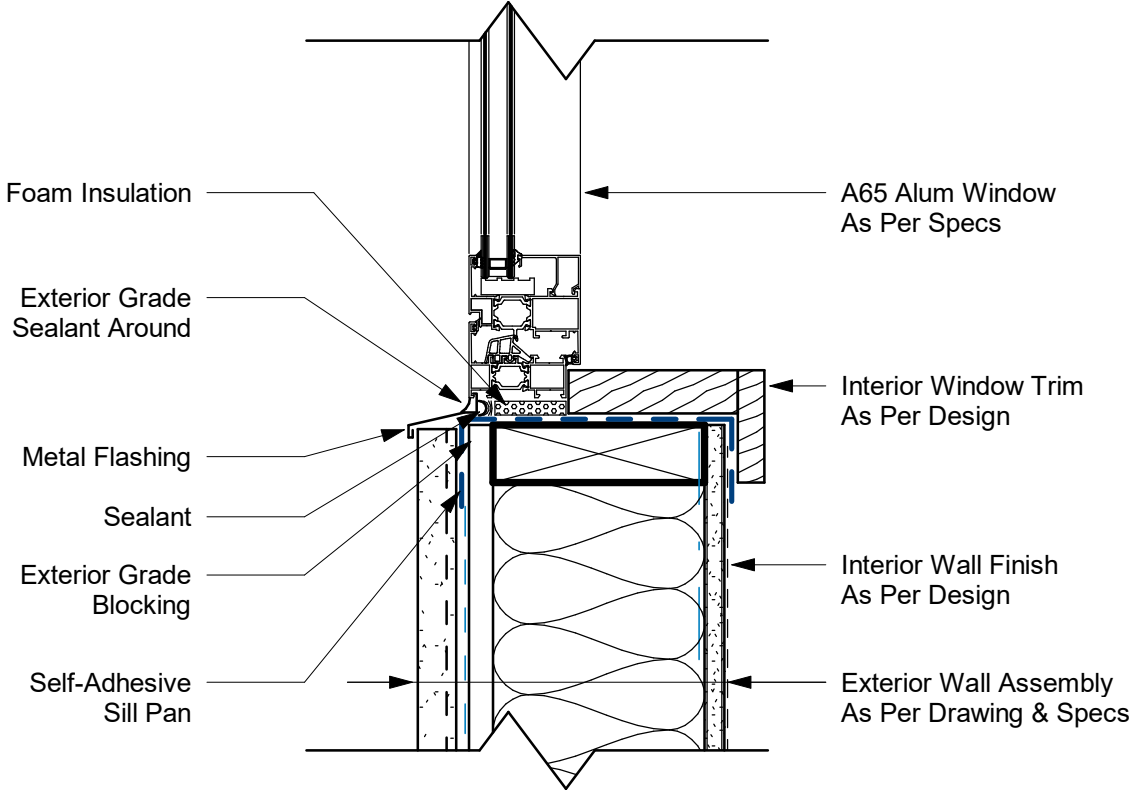
1:5

# ALUMNUM WINDOW - STUCCO



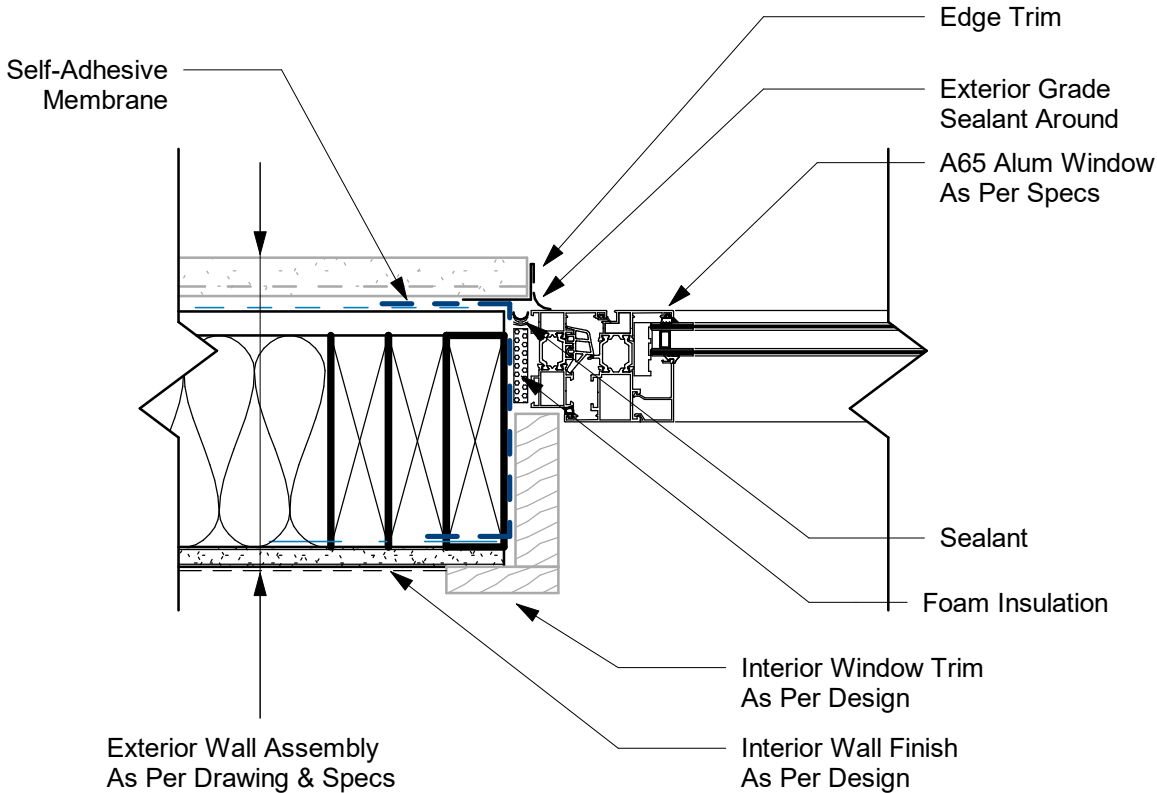
AL65 HEADER - STUCCO

1:5



AL65 SILL - STUCCO

1:5



AL65 JAMB - STUCCO

1:5



